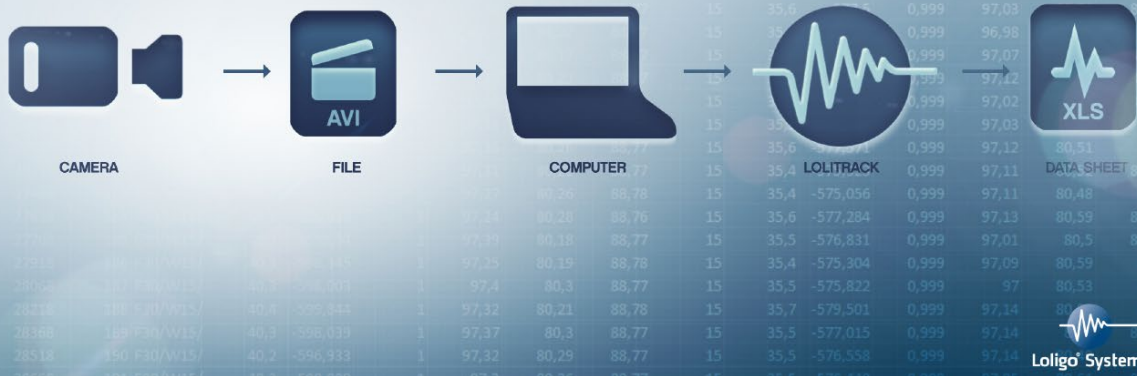




Loligo® Systems

LOLITRACK SOFTWARE HOW THE SYSTEM WORKS:



Version 4.2.1



www.loligosystems.com

CONTENTS

1. GETTING STARTED	2
2. TYPICAL APPLICATIONS	4
3. USER GUIDE	5
3.1 SINGLE OBJECT MODE	7
3.2 SINGLE ARENA MODE	11
3.3 EVENT RECORDER.....	16
3.4 BATCH TRACKING	19
3.5 ANALYSIS	19
4. TROUBLESHOOTING.....	26
4.1 PREVIOUS VERSIONS	26
4.2 RUN LOLITRACK ALWAYS AS ADMIN	27
4.3 WIBU SOFTWARE PROTECTION	27
4.4 DRAWING A POI PLACES TWO POI NEXT TO EACH OTHER	27
5. GLOSSARY OF TERMS AND PARAMETERS	30

1.GETTING STARTED

Please follow the steps below to get started.

1. Install the new Lolitrack software on a PC with WIN 10, 8, 7, Vista or XP

Minimum PC requirements:



CPU	Intel P4 Duo 2GHz or similar
RAM	4 GB
USB ports	1
Monitor	1024 x 768



Settings files saved when using Lolitrack 4.1 are not compatible with the new Lolitrack 4.2 version.

*Please **DO NOT** update the software if you do not wish to use the new Event Recorder feature!*

The software performance will depend on video frame rate, image resolution, file length and format. Thus, the minimum PC requirements listed here might not deliver a satisfying performance if working with hi-speed video (>>25 fps), hi-resolution images (>>1.3 MPixel) or very large files (>1 GB).

2. Insert the Loligo USB memory stick and run Lolitrack.exe. Then follow the instructions on the screen. For Win 8 or WIN7 users please make sure to have administrator rights.
3. Lolitrack requires a NI Visio runtime license. During the installation you will be asked for an activation code, e.g. M12X34567. Please make sure the PC is connected to the internet during the activation.
4. The installation will require a restart of the PC when prompted.
5. Insert the green (WIBU) hardkey protection dongle into free USB port.
6. Start the Lolitrack software (Start→All programs→Lolitrack).
7. Open one of the five example videos from the Lolitrack program file directory folder by clicking File→Load raw data and choose a *.bin file.
8. While loading a raw data file, Lolitrack will search for a settings and video file in the same folder and open these if found.
9. Get familiarized with the settings, mask, arena, etc. for the current video file. For more detailed information on how to use all features in Lolitrack, please go to page 5.
10. Now open your own AVI video file for analysis (File→Load video).

11. Start by drawing a line around the area of interest (e.g. the arena inside which the object is confined) using any of the drawing tool in the left panel. Then click the Arena button in the left panel to create it.
12. Go to the tab labeled Arena 1 by clicking it.
13. Start defining the object to be tracked by clicking the Auto Threshold button, and then click on the part of the object that you want to track the position of. All pixels of similar color will be marked with the threshold colors.
14. If pixels that are not part of the object to be tracked appear yellow, you can use drawing tools to mask out areas in which the object should not be tracked, or you can adjust the three vertical (RGB) threshold bars so that only the object is found.
15. Use the scroll bar below the video image to scan the entire video file. If light conditions change over time or between areas inside the arena, the initial threshold settings might not be adequate for the entire sequence.
16. When the settings are correct, click Track in the upper menu bar and choose file name and destination for the raw data. The object will now be tracked in all the video images, and this might take several minutes depending on image resolution, the duration of the video file and the PC configuration.
17. When the tracking process is over, click Analyze in the upper menu bar to choose what behavioral parameters the software should calculate. Finally, click Next and choose file name and destination for the analyzed data.
18. Exit LoliTrack by clicking File→Exit.

2.TYPICAL APPLICATIONS

- Track a focal animal (see video example "Focal animal").
- Track focal animals in multiple arenas, e.g. micro plates (see video example "Focal animals in multiple arenas").
- Track a pair of unmarked animals, or mark each of the animals with a marker of similar color (see video example "Pair of marked animals").
- Track orientation of a focal animal with two markers of similar color but different size (see video example "Marked focal animal").
- Track multiple animals (see video example "Multiple animals") **NEW!!**

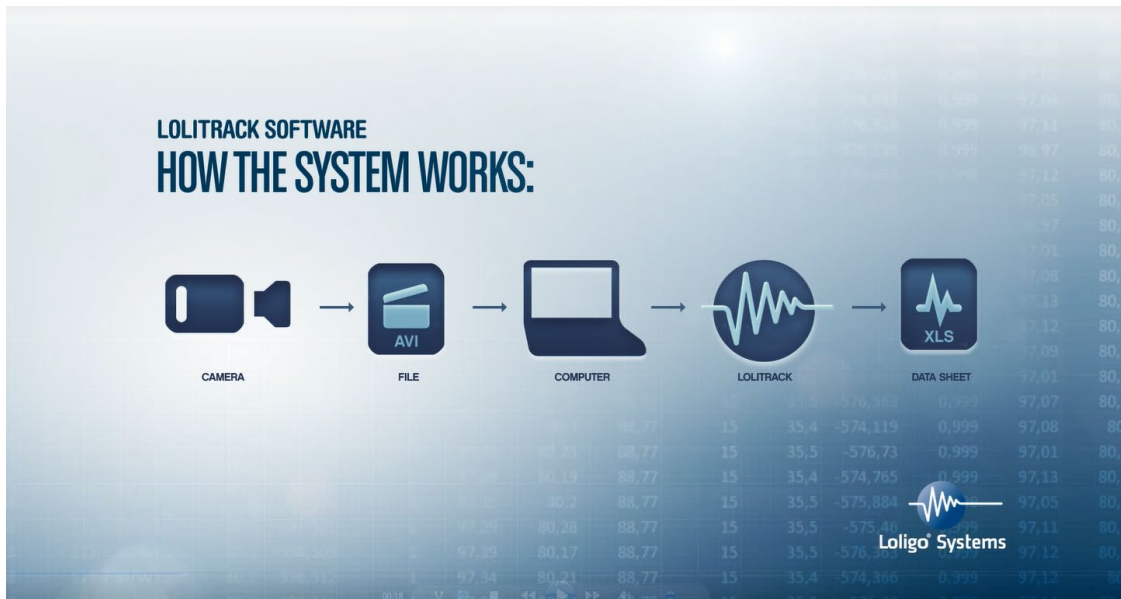
Notice that settings and data can be stored in four different file types:

- a. A binary (.bin) file, with tracking data only
- b. A configure (.conf) file, with all the file specific settings like threshold values, arena borders etc.
- c. A text (.txt) file, with all the analyzed data like velocity, active time etc.
- d. A video (.avi) file, i.e. the original video file but with a tracking data overlay.

NB

It is important to save all file types in the same destination as the analyzed video file.

3.USER GUIDE



NB

To enjoy all functions in Lolitrack it is necessary that the PC user has administrator status. (page 27)

Start Lolitrack from the start menu in Windows. It might take a few seconds to load the program initially. Watch the Windows task bar to monitor the loading process.

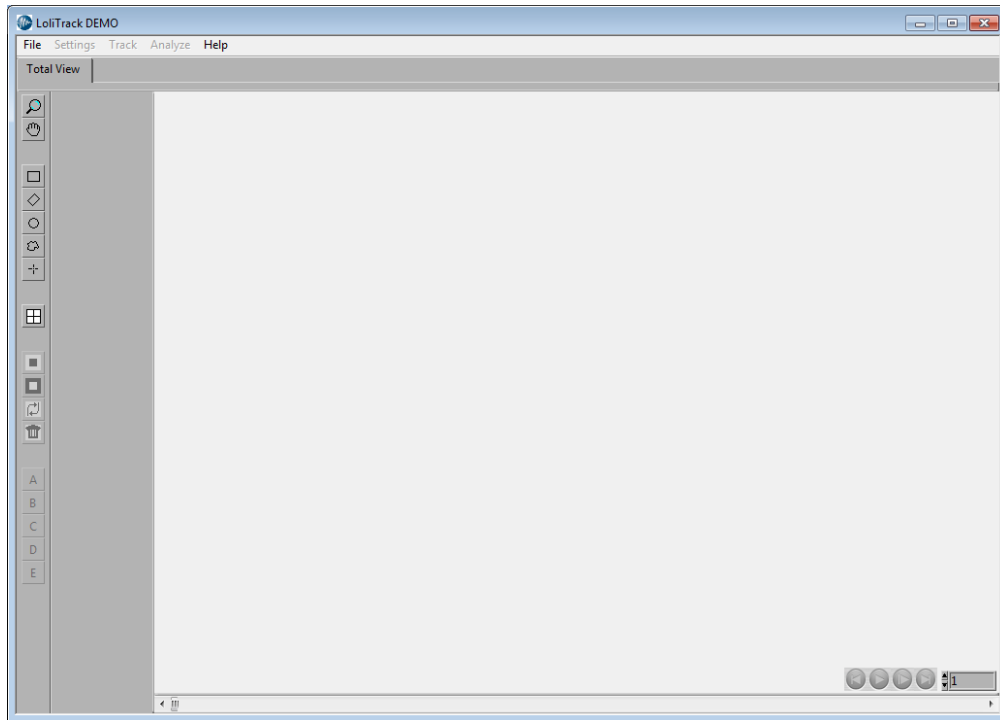


Fig. 1 - LoliTrack GUI

LoliTrack has two modes:

Single object (1-24 arenas) mode

Single arena (1-24 objects) mode

Single object (1-24 arenas)

In this mode the user will draw an arena around an area in which one object can freely move. After the threshold bars are set, LoliTrack will handle all interesting pixels as one object. Up to 24 arenas can be drawn in this mode which all will be tracked at the same time. This is the default mode.

Single arena (1-24 objects)

In this mode only one arena can be drawn. But the arena may contain up to 24 objects, same colour and approximately same size. After the threshold bars are set, LoliTrack will sort all interesting pixels and fit them regarding the object's last frame positions. Please be aware that the tracking time is longer compared to the single object mode.

3.1 Single object mode

Load an AVI video file by clicking File→Load video. After the file is loaded the zoom button can be used to fit the video file to the computer screen. Hold Shift button simultaneously to then zoom back out.

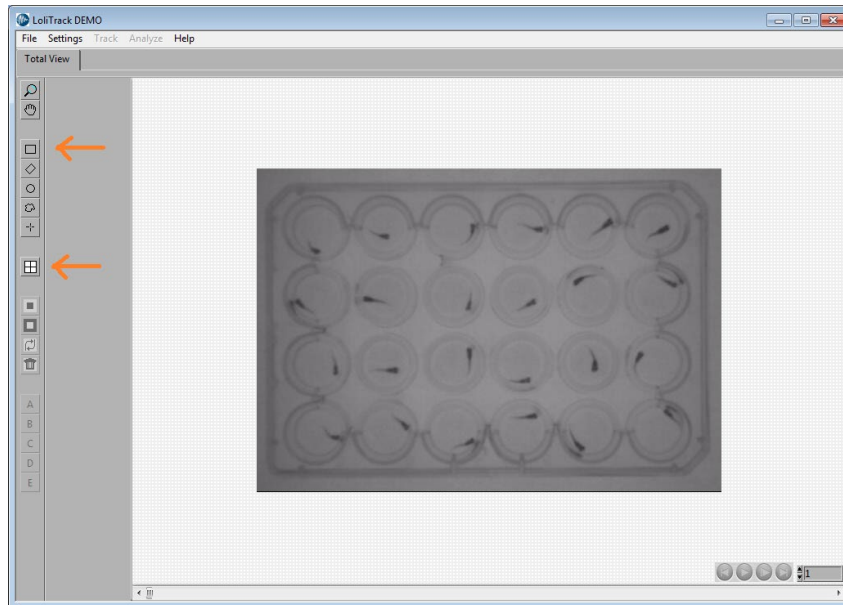


Fig. 2 - Define arena

Define an area of interest around every arena with objects that you want to track, e.g. click on the rectangular drawing tool button to draw a line around square tanks, arenas, pens etc. Then click the Create Arena button. Do this for all the arenas that you want the software to track objects. Notice that a tab appears in the bar above the video image for every defined arena.

The size of the area of interest can be found in the ROI field. The area of interest can be moved with the arrow buttons.

If required the center of the arena can be shown. This feature can be enabled/disabled in the View menu.

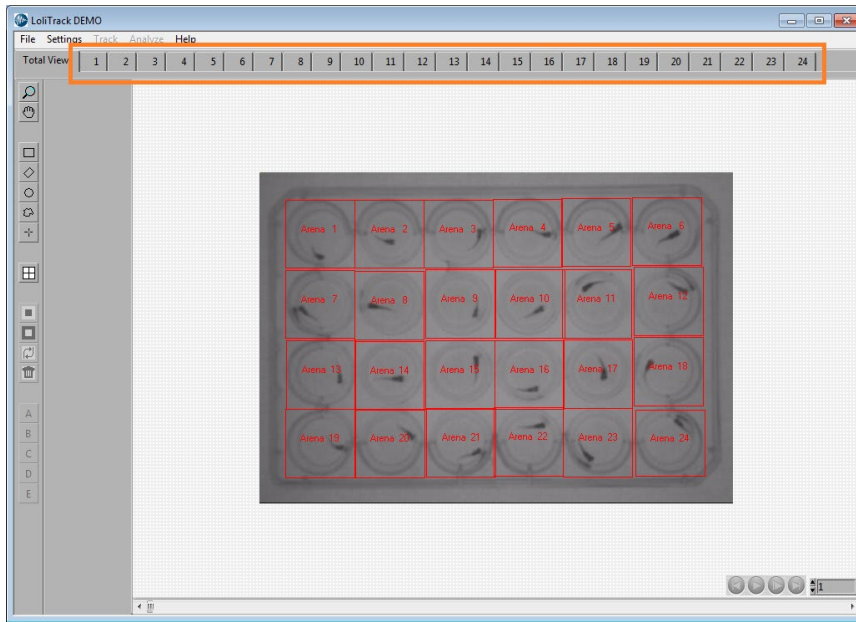


Fig. 3 - 24 arenas with one object per arena

Click on each arena to set up threshold values for tracking objects. The software will find objects that are in contrast with the background. Start by clicking the Auto button, and then click on the object. The three (RGB) threshold bars will now be arranged to find similar colored pixels in the image. You can also change the range of threshold values for each individual bars incase automated settings are inadequate. All pixels in the image that meet all three thresholds will be marked as yellow.

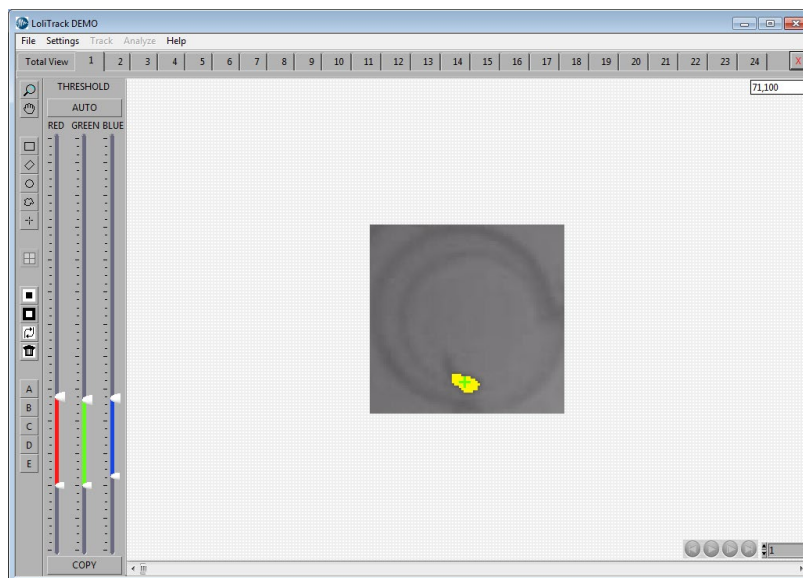


Fig. 4 – Arena

Click the Copy threshold button to copy the threshold values from arena 1 to all other arenas, or adjust threshold settings for each arena if light conditions or image quality (contrast) differs. Changing the threshold values in one arena does not affect other arenas, unless the Copy button is used.

In some arenas the object is mirrored in the circular fish tank walls. This can be avoided by creating a mask to avoid tracking outside the area of the tank. Click on the Draw circular area button and draw a circle around the chamber. Then click on the mask outside area button.

Check for every arena if the threshold values must be changed or if it is necessary to mask one or several areas in the image.

To check if threshold settings provide correct tracking, scroll through the video file using the horizontal bar below the video images.

If the video images are noisy or contains pixels of the same color as the object that you want to track, the tracking settings might correct the problem,

Click Settings→Filter and activate Erosion 3x3, iterations x1. Now all pixels are eroded. This will remove small objects consisting of only 1-2 pixels. However, it will also decrease real object sizes, and thus should be used with care or some information might be lost. Click Settings→Filter one more time and activate dilatation 3x3, iterations x1. Now all remaining yellow pixels are dilated one time, and the original size of the object is back again. The Erosion/Dilatation function is to remove small outlier pixels.

Now is a good time to save the threshold and mask settings to a file. Click File→Save settings and save the settings file in the same destination as the video file.

Now the video file is ready to be tracked. Click Track in the menu and save the raw data file in the same destination as the video file. Then click OK. Now LoliTrack will start tracking objects in every arena frame by frame.

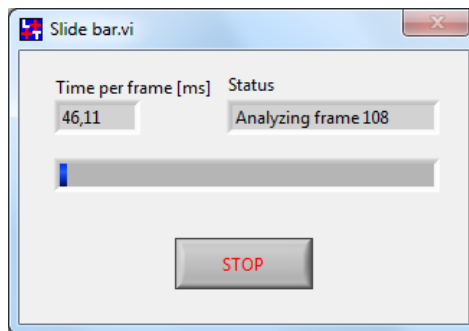


Fig. 5 - Tracking status

This might take some time. The time it takes to track the whole video file depends on several parameters:

- PC configuration – a fast PC will use less time per frame
- Size of arenas – large arenas will contain more pixels to be analyzed.
- Duration of video – Long video files means many frames to be analyzed.
- Frame rate – the higher the number of frames per second the longer it takes to analyze the entire file.

When the tracking is done the raw data file is loaded afterwards, and the tracking results will be shown in the Total View tab.

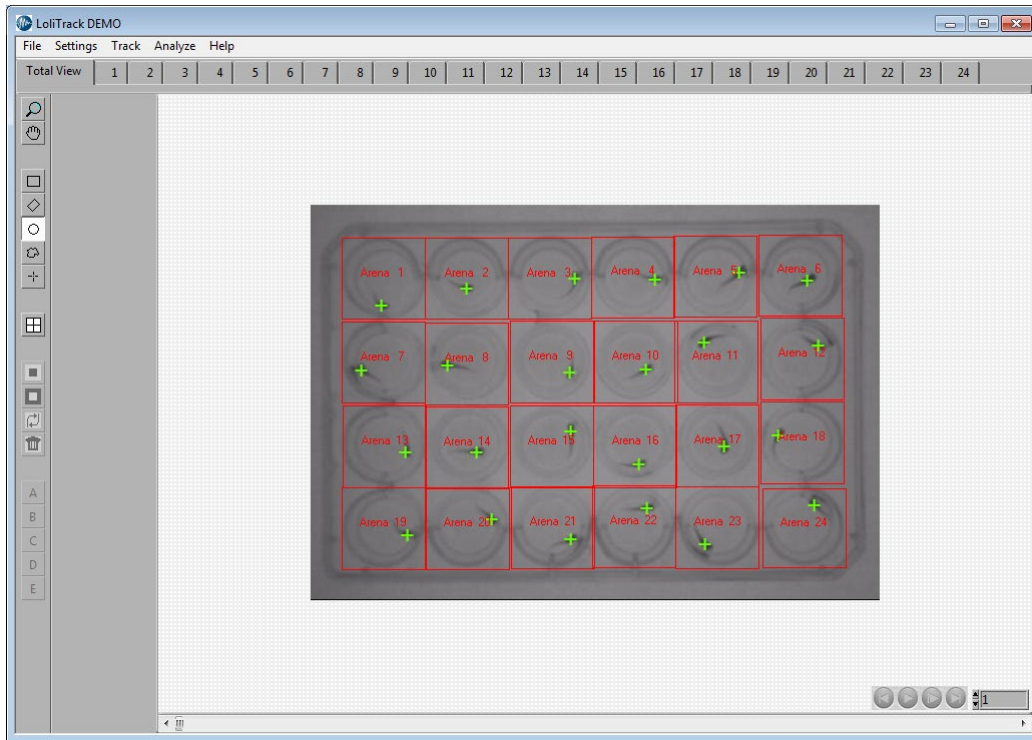


Fig. 6 - Result of tracking

Now the play button can be used to view the whole video. Instead of watching the center position of the object it might also be interesting to watch the trace instead. Click Settings→View, and enable Show trace and set the trace length to 5 seconds. Then click OK.

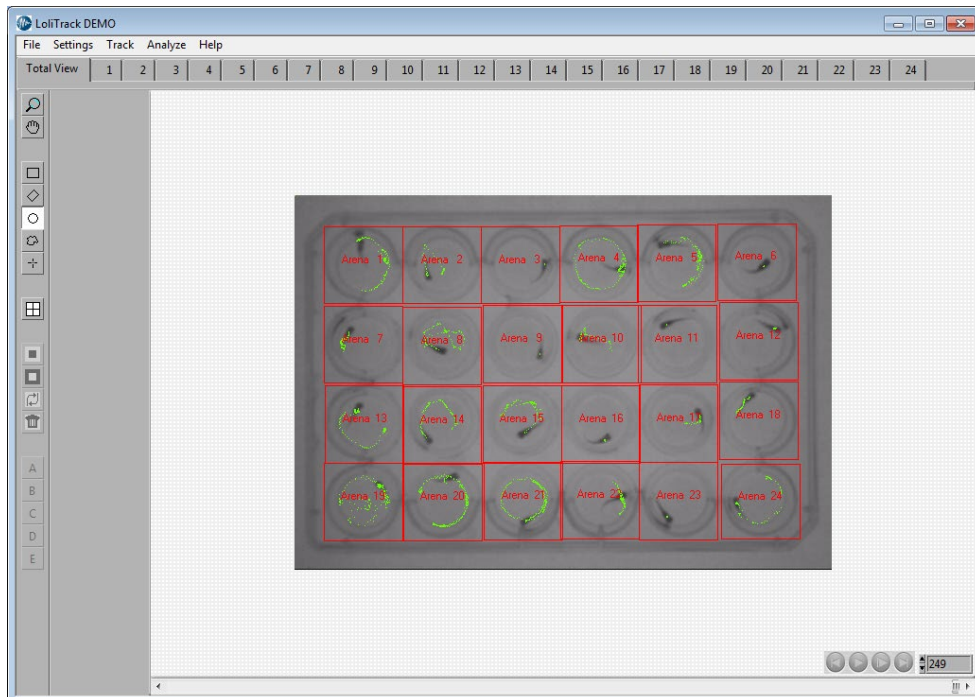


Fig. 7 - Tracking result with trace

Validate the object tracking by scrolling through the video, before clicking Analyze. If object tracking in one or more arenas are failing, adjust thresholds bars, mask areas, or use

erode/dilate settings to correct any problems and click Track again to create a valid raw data file.

3.2 Single arena mode

Load an AVI video file by clicking File→Load video. After the file is loaded the zoom button can be used to fit the video file to the computer screen. Use Shift to zoom out.



Fig. 8 - Define arena

Define an area of interest around every arena with objects that you want to track, e.g. click on the rectangular drawing tool button to draw a line around square tanks, arenas, pens etc. Then click the Create Arena button.

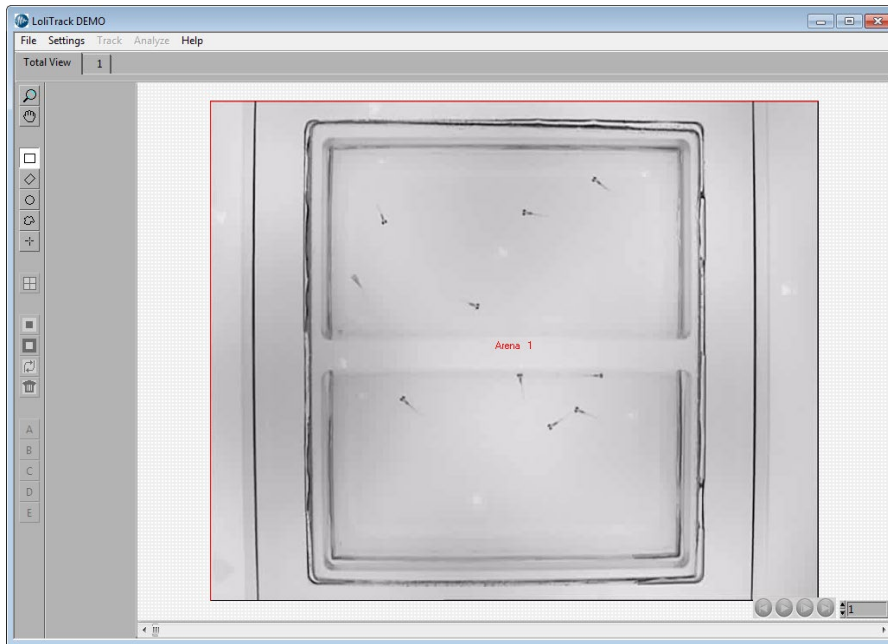


Fig. 9 - 1 arena with 10 objects

Click on arena tab 1 to set up threshold values for tracking objects. The software will find all objects that are in contrast with the background. Start by clicking the Auto button, and then click on one object. The three (RGB) threshold bars will now be arranged to find similar colored pixels in the image. You can also change the range of threshold values for each individual bars in case automated settings are inadequate.

All pixels in the image that meet all three thresholds will be marked in the following colors: red, yellow and purple. The difference in colors means, that if many pixels are clustered together, they are more interesting. Purple pixels are very interesting, yellow are good, red is valid.

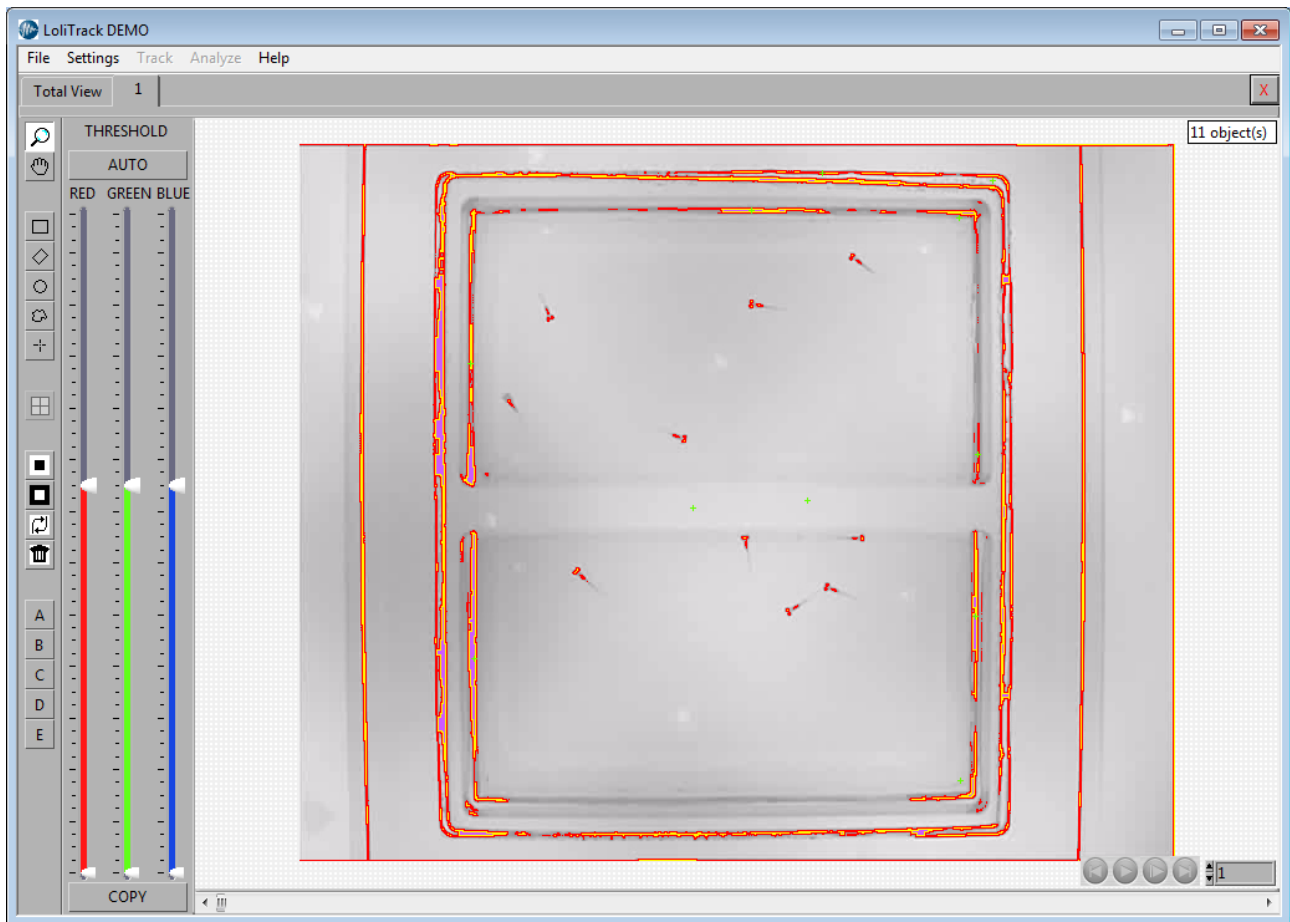


Fig. 10 – Arena

Because the objects are very small, the objects should be dilated. Click Settings→Filter, enable dilatation 3x3 and iterate it x3, then click OK.

Now a mask is needed since the wall of the aquaria is in the same threshold color range as the object. Click on the Draw rectangular area button and draw a rectangle around the chamber. Then click on the mask outside area button.

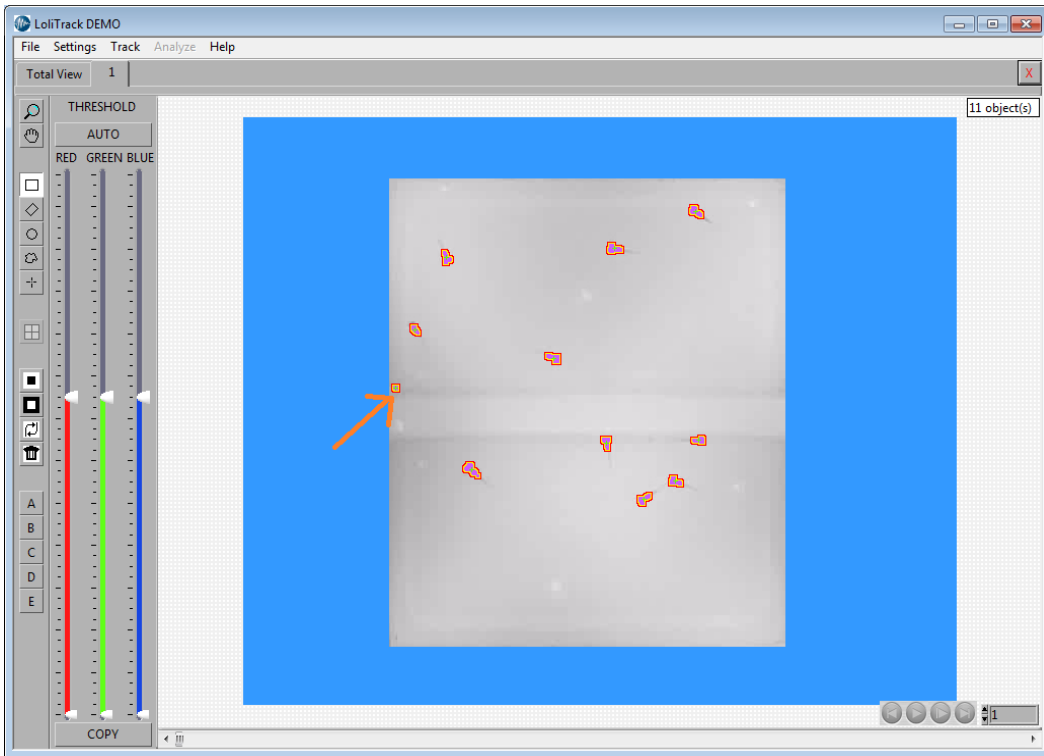


Fig. 11 – Dilated objects

The mask looks good, but LoliTrack finds 11 objects. There are only 10 objects, so one of the objects found are still artifacts/wrong objects. Mask it out.

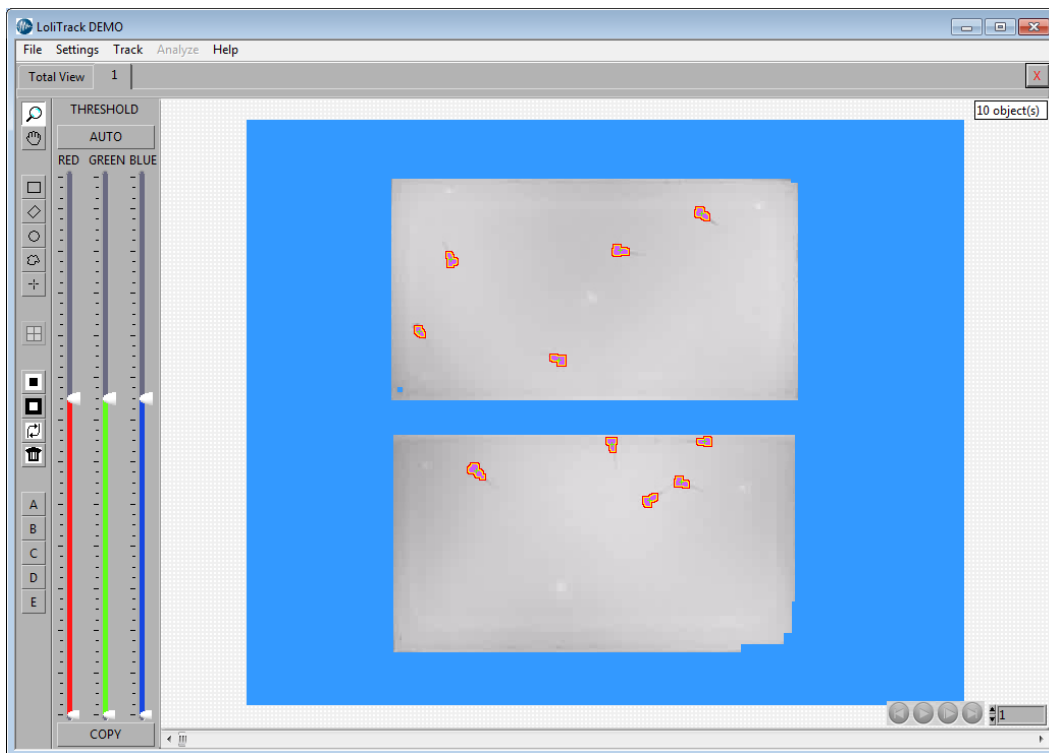


Fig. 12 - Masked arena

To check if threshold settings provide adequate/sufficient tracking, scroll through the video file using the horizontal bar below the video images. Check for several frames if the threshold values must be changed or if it necessary to mask one or several areas in the image.

After checking several frames, it would be advisable to save the threshold and mask settings. Click File→Save settings and save the settings file in the same destination as the video file.

Now the video file is ready to be tracked. Click Track in the menu and save the raw data file at the same destination as the video file. Then click OK. Now LoliTrack will start tracking objects frame by frame.

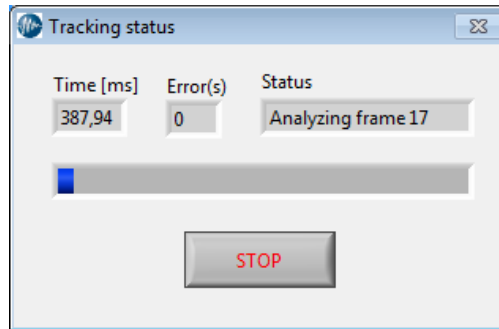


Fig. 13 - Tracking status

This might take some time. The time it takes to track the whole video file depends on several parameters:

- PC configuration – a fast PC will use less time per frame
- Size of arenas – large arenas will contain more pixels to be analyzed.
- Duration of video – Long video files means many frames to be analyzed.
- Frame rate – the higher the number of frames per second the longer it takes to analyze the entire file.
- Number of frames where clustering of objects occur – For valid tracking of those frames the tracking algorithm will need additional time.
- Number of frames where divisions of objects occur – For valid tracking of those frames the tracking algorithm will need additional time.

The error field shows how many errors occur during tracking. If this number versus number of frames gets too high, click STOP.

When the tracking is done or stopped, click the Total View tab. Now the tracking is shown, but also the frames in which error occurs.

NB! *only the first 30 error frame numbers are shown.*

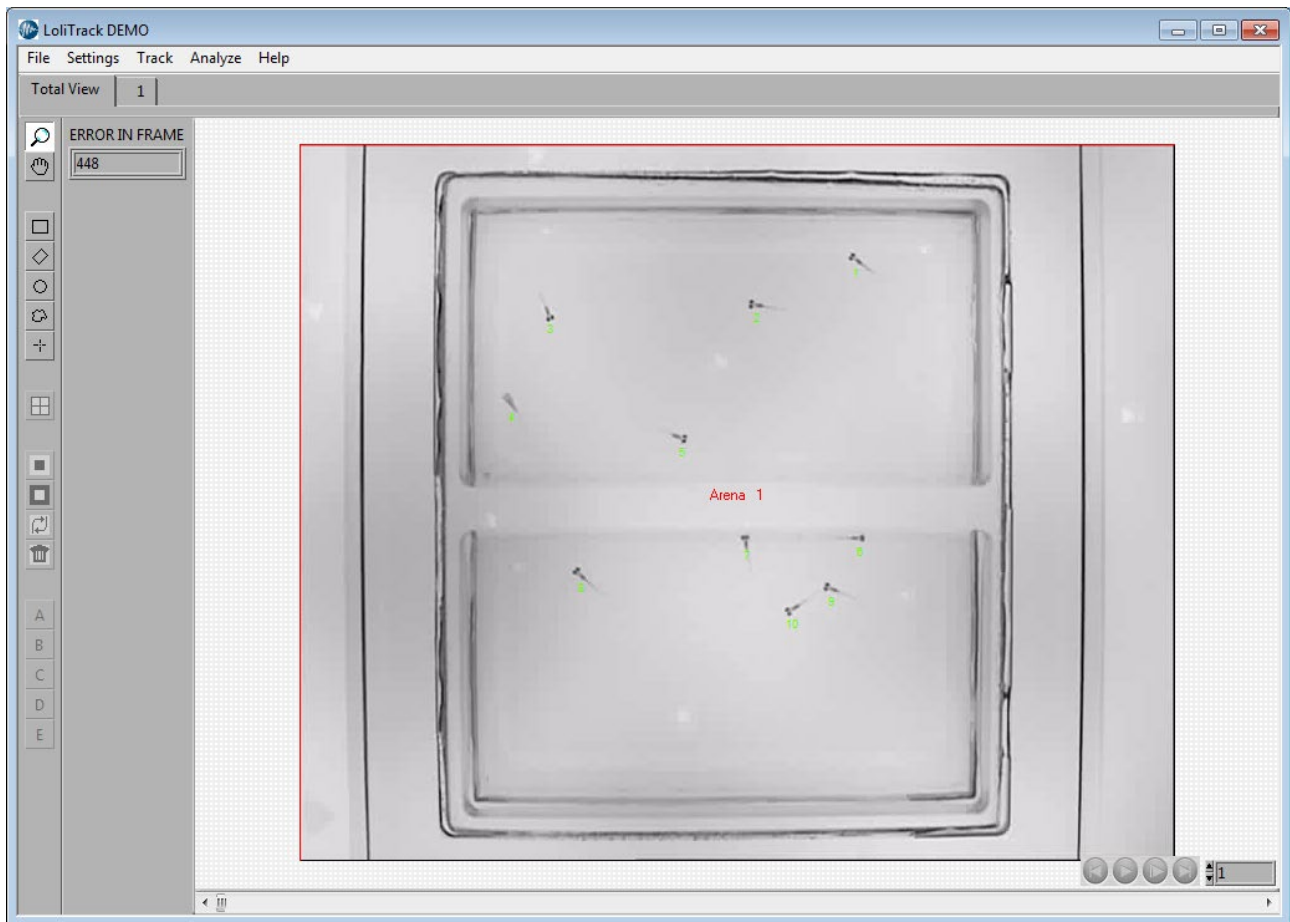
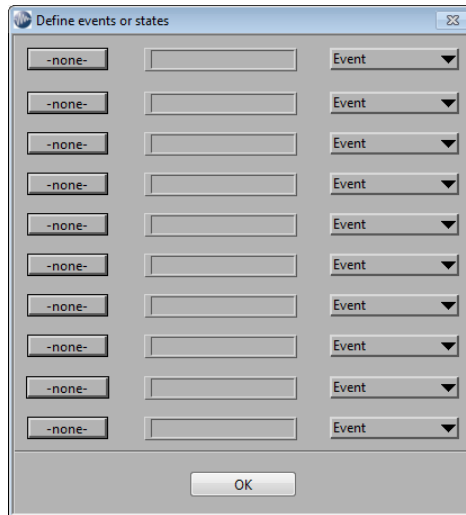


Fig. 14 - Result of tracking

After the tracking is ended, click Settings→View and enable Show ID. Now the objects are labeled with a number.

3.3 *Event recorder*

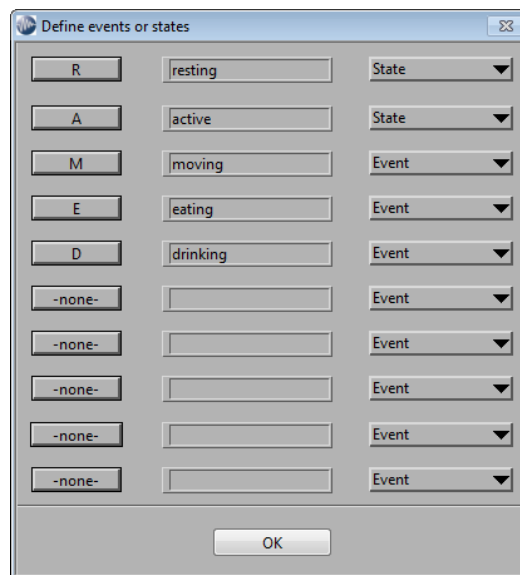
When quantifying behaviours, organisms may display several distinct behaviours which can be categorised, for example, resting, active, drinking, eating. To categorise behaviours, please use the event recorder for events and/or states that must be defined. Please choose Settings→Event recorder to define events and/or states.



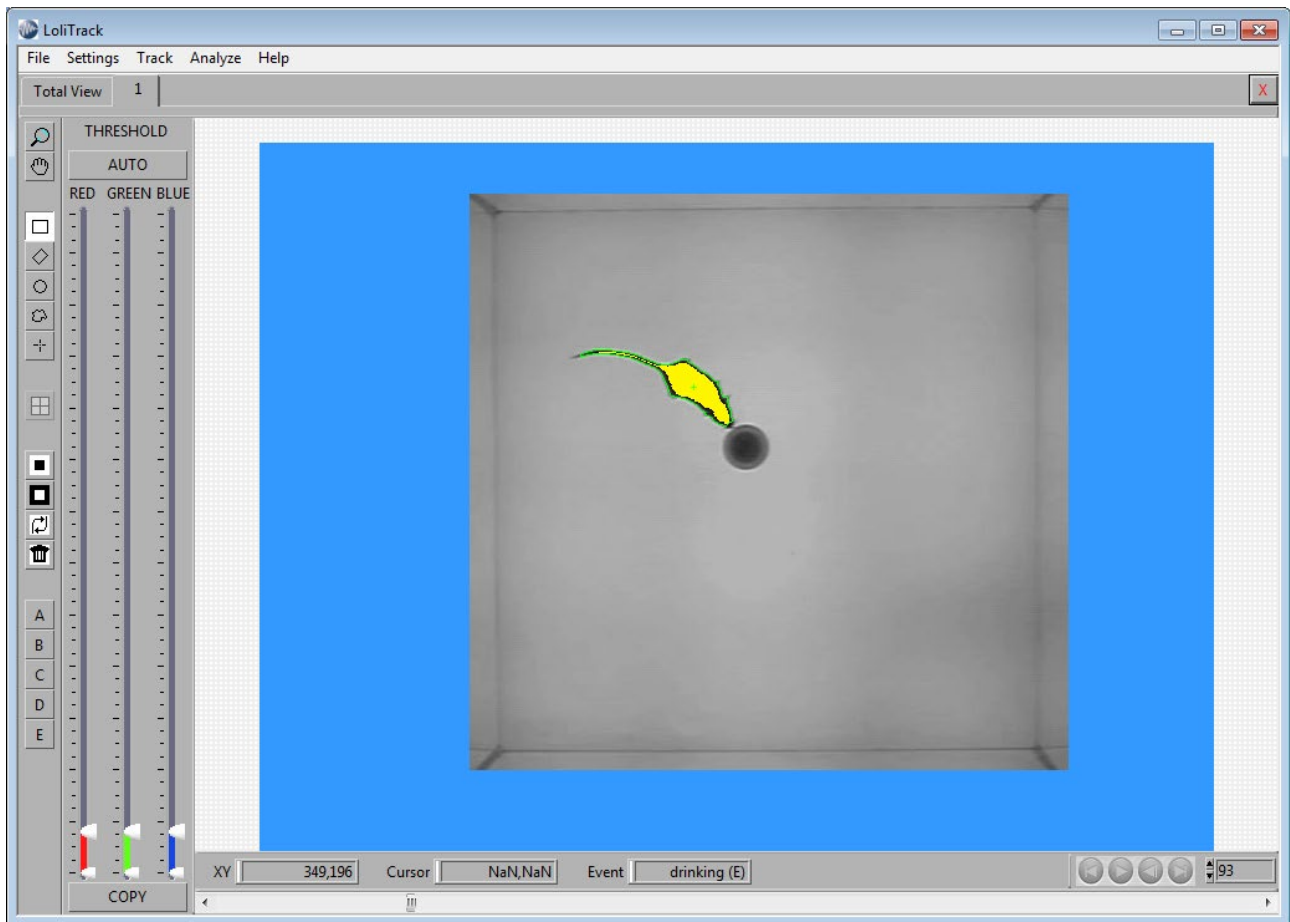
To categorise a behaviour, assign a key with the mouse, then press a key board number or letter. Now enter the text that this key board stroke defines. To delete the assigned key, simply press the Esc key. Finally, choose if the key board stroke defines an event or a state.

Event: An event is a one-time only action.

State: An action that continues until another behavioural state occurs.



After the events and states are defined, the user can now scroll through the video file and use the keyboard to register events and or states. Click on an arena and browse through the video file. The key board stroke will be registered and shown in the field Event, e.g. drinking.



The event will display the described behaviour and the letter in parenthesis will indicate the action, either (E) = Event or (S) = State, for example, drinking (E) (see figure above).

When analyzing the file, the key board strokes will be sorted in two columns when analyzed with time stamp data.



The recorded key strokes will be saved in the settings file and NOT in the raw tracking file.

3.4 Batch tracking

The batch tracking allows tracking of multiple videos without user interaction.

1. Start by loading one video file and make the settings (arena, mask, threshold etc.) needed for reliable tracking.
2. Now load a batch of video file (File/Videos) that should be tracked with the exact same settings.
3. LoliTrack will track all of these video files in the same way as the first one and save a file with tracking data (time-stamped X,Y coordinates) for each file using the same name as the video file.

This will save a lot of time since the user will not have to wait for each file to be tracked by the PC (minutes-hours) before loading the next file.

4. The analysis of the tracking data files is done one by one.

3.5 Analysis

Only after tracking has been completed it is possible to analyze data.

NB! *The Analyze tab is deactivated and will only become apparent after a raw data file is available (i.e. loaded or built).*

The parameters which can be analyzed are almost the same regarding dependent on the chosen tracking mode.

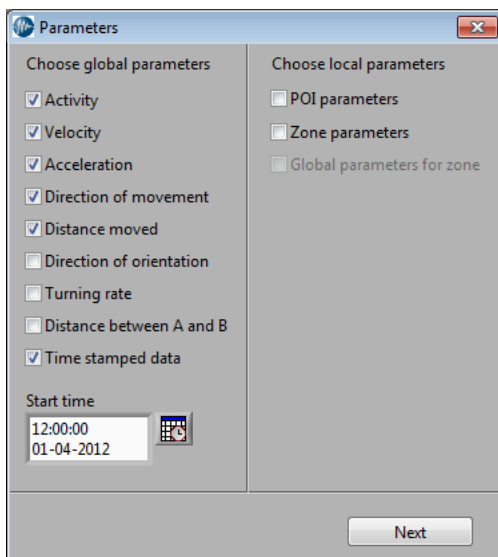


Fig. 15 - Single object parameters

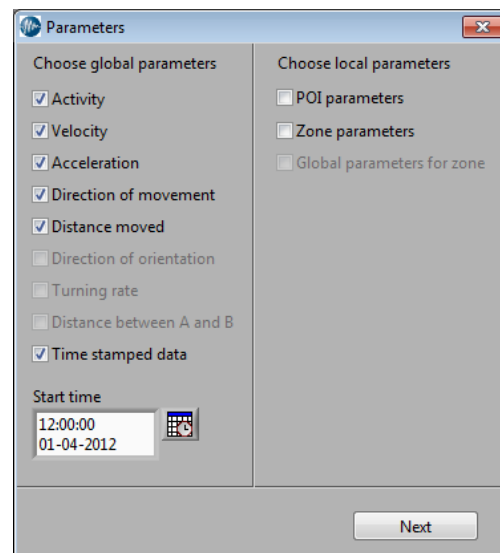


Fig. 16 - Single arena parameters

To get time-stamped X,-Y positions for each object, click Analyze, and choose Time stamped data. Then click Next. Save the data file, and click OK.

Now the raw data is analyzed, and X,Y-positions and any error code for each object/arena is written to a time stamped file. First a header which contains information about the file, tracking data etc:

```

Date & time of file creation  24-10-2011/11:48:21
Data file path                C:\Gurani\gurani1.txt
Video file path               C:\Gurani\gurani1.avi
Raw data file path            C:\\Gurani\gurani1.bin

Min. distance                  1x1
Direction factor               2
Latency [frames]              30
Frame rate                     25
Orientation direction          B is head
Time stamp start               01-01-1904/01:00:00
Duration [HH:MM:SS]           00:05:00

```

```

Erosion                        none
Dilatation                     none

```

```

Pixel ratio [pix/pix]         1

```

After the header the time stamped data is written:

Frame	Time	Error_Arena 1	X-pos_Arena 1	Y-pos_Arena 1
1	01-01-1904/01:00:00,000	No	71	100
2	01-01-1904/01:00:00,040	No	75	101
3	01-01-1904/01:00:00,080	No	77	101
4	01-01-1904/01:00:00,120	No	80	100
5	01-01-1904/01:00:00,160	No	81	100
6	01-01-1904/01:00:00,200	No	83	99
7	01-01-1904/01:00:00,240	No	84	99
8	01-01-1904/01:00:00,280	No	85	98
9	01-01-1904/01:00:00,320	No	86	97
10	01-01-1904/01:00:00,360	No	86	97

LoliTrack will also calculate behavioral parameters like velocity, distance moved etc.

In order to get the proper units for these data it would be advantageous to perform a pixel to distance calibration.

Click Settings→Calibration, then click the line drawing tool and draw a line of known length, e.g. along a ruler placed somewhere in the image. The line in the example below is drawn from one corner of the micro plate and the other, and the distance is measured to be 14 cm. Enter those values, and click OK.

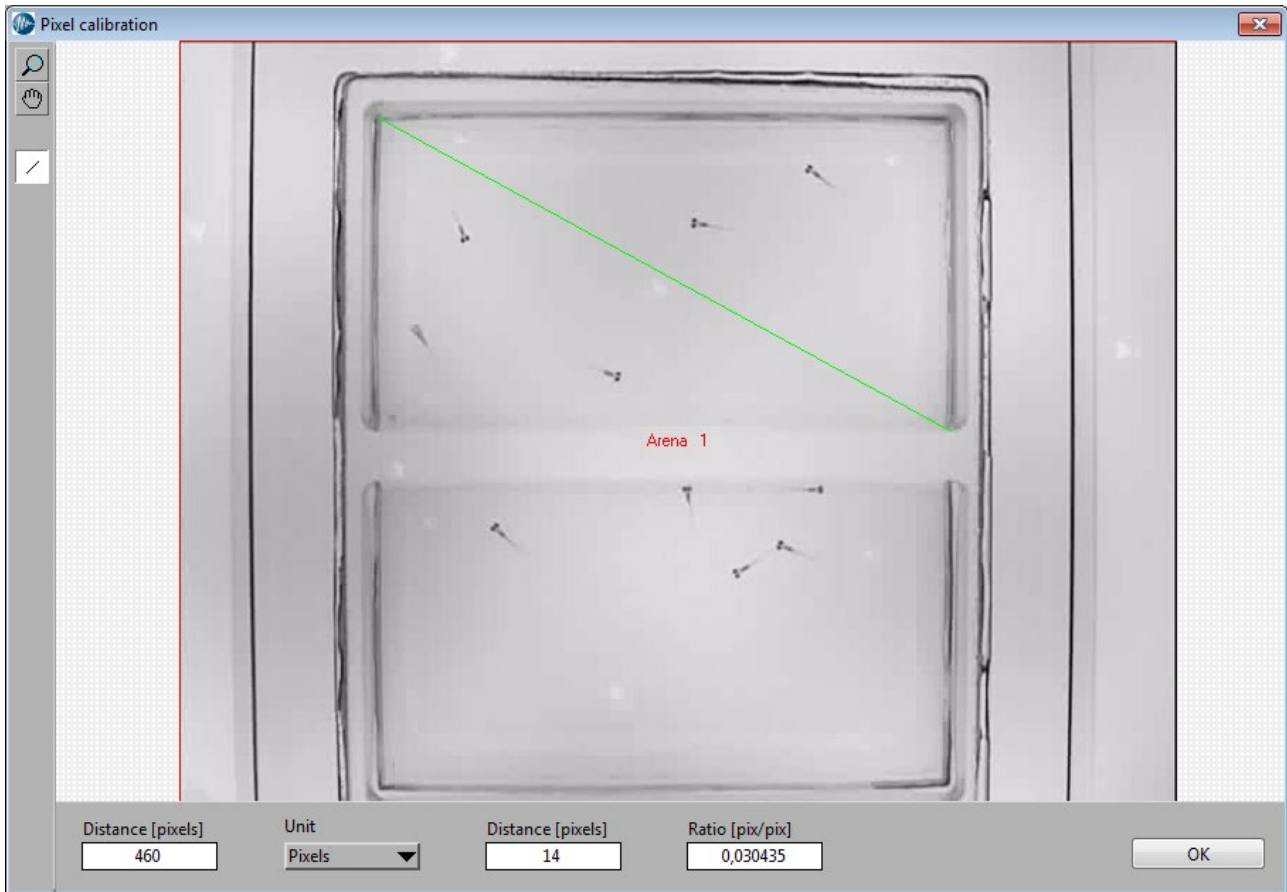


Fig. 17 - Pixel calibration

After a calibration is done all parameters where distance is included is calculated in real distance (cm, mm or m) and not pixel length anymore.

Run the analysis one more time, but this time include velocity and distance moved. Just before the time stamped data a new column is visible. This shows the summarized data of the parameters:

Parameter/Arena	Arena 1	Arena 2
Avg. velocity	1,358695	1,183356
Distance moved	84,89128	41,8908

For velocity it is the average velocity and for distance moved it is the complete distance moved for the whole video.

In LoliTrack a lot of other parameters can be calculated. Please see below.

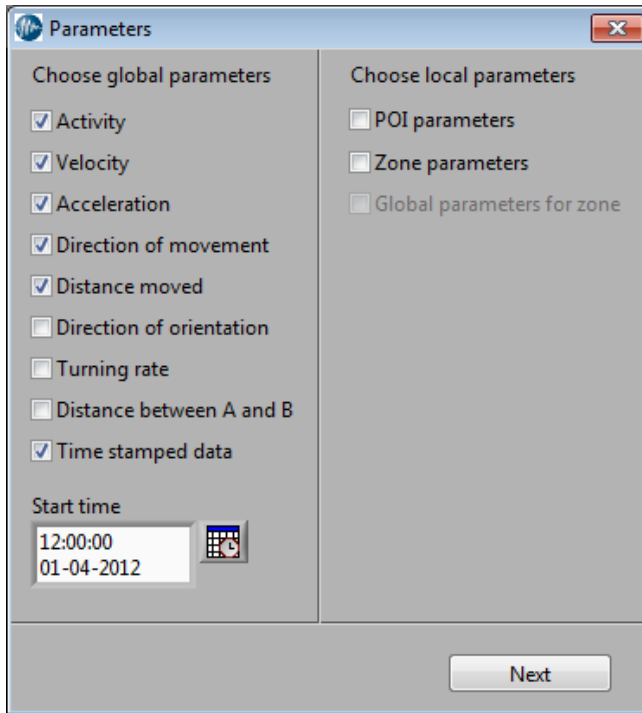


Fig. 18 - Analysis parameters

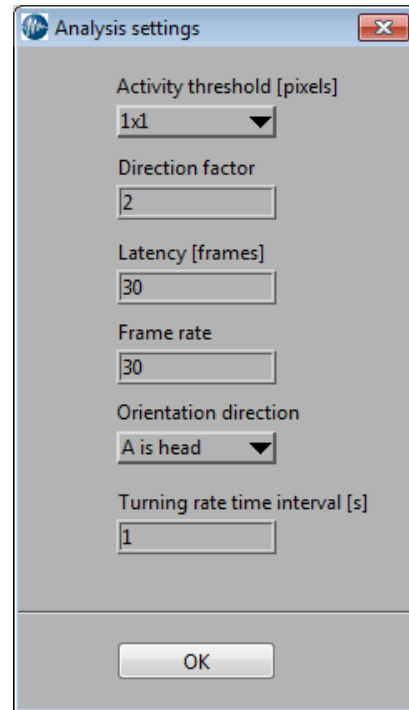
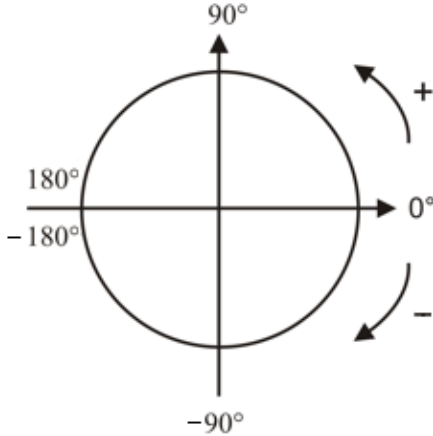
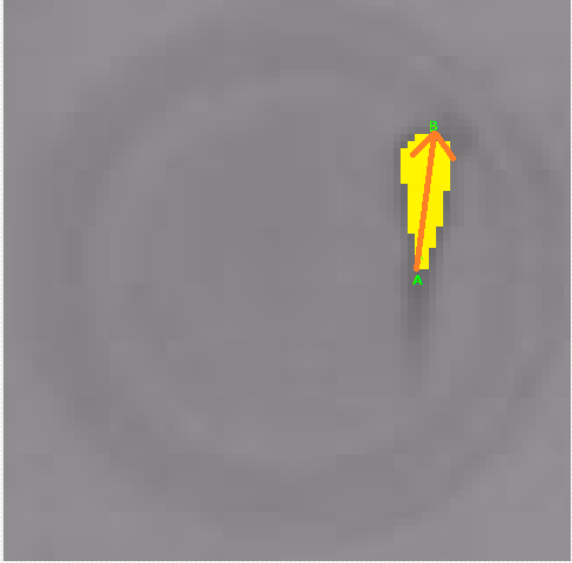


Fig. 19 - Analysis settings

Summary of parameters

Terms	Definition
Activity	This parameter will calculate active time and inactive time, i.e., how much of the time have the animal been in an active and inactive state. Active state is defined as moving a distance longer than a minimum threshold value (in pixels) from frame to frame, e.g., if the threshold value has been set to 5x5 pixels and the X,Y position of the animal change by less than 5 pixel between two frames then the software will record the animal as being inactive until it changes its position by more than 5 pixels from one frame to the next. The threshold value should be set to avoid random image noise (flickering) being recorded as animal locomotion.
Velocity	If the object is active, the velocity of movements is calculated. The velocity is calculated frame by frame. The average velocity in the header is calculated from positive velocity values only.
Acceleration	If the object is active, the acceleration is calculated. The acceleration is calculated frame by frame. The average acceleration in the header is calculated from positive acceleration values only. The average deceleration in the header is calculated from negative values.
Direction of movement	<p>If the object is active, any recorded change in direction will be calculated. The direction of movement is calculated frame by frame.</p> <p>NB: All angles will be calculated in the following way (see below).</p> <div style="text-align: center;">  </div> <p>Fig. 20 - Angles definition</p>
Distance moved	If the object is active, the distance moved is calculated frame by frame and over the entire video file. The sum of total distance moved will be summarized in the file header.
Direction of orientation	The direction of orientation can be determined by the software if certain criteria are met. The orientation is determined from the position of the following two A and B positions:

	<ul style="list-style-type: none"> ○ A is the yellow pixel farthest away from the center of gravity (X,Y-position of entire object). ○ B is the yellow pixel farthest away from point A.  <p style="text-align: center;">Fig. 21 - Objects A and B position</p> <p>This means that point A will be a tail position and point B will be the head position if the object has a fusiform shape like the fish in the example. Set orientation direction to "B is head". The orientation will be calculated as the direction between A and B, where B is head. For different shaped objects it might be necessary to add two similar colored markers, e.g. one small marker near the anterior and one larger near the posterior of the object.</p>
Turning rate	Turning rate is calculated from the direction of orientation and the direction of movement. Turning rate is calculated as the change in direction after a given time interval. The time can be set as "Turning rate time interval" under settings. The turning rate is calculated in degrees (°) change per given time or degrees (°) change per distance moved in the given time interval. The average turning rate summarized in the file header is calculated from all turning rate values.
Distance between A and B	Calculates the distance between A and B frame by frame, e.g. this can be used to track inter-individual distances (IID) between a pair of marked animals if applying a small marker on one and a larger marker (of similar color) on the other animal. The average distance between A and B summarized in the file header is calculated from all values.
Time stamped data	this will create a time-stamp data record for each parameter calculated. If this option is chosen in combination with many parameters, the file writing time might increase significantly.
POI parameters	This will calculate the distance between any points of interest defined by the user, and the objects X,Y-position. It will also calculate the number of times the object enters a user-defined minimum distance zone around each POI. A new touch can only be registered after a time latency set by the user. The

	average distance to POI and the total number of touches summarized in the file header is calculated from all distance values.
<i>Zone parameters</i>	This parameter will score object activity in user-defined zones and calculate the number of zone visits and the time spend in each zone. The total number of zone visits and time spent in each zone summarized in the file header is calculated for the entire video file.
<i>Global parameters for zone</i>	This parameter will calculate all each global parameters selected for every user defined zone, e.g. if velocity is selected as global parameter, velocity will also be calculated for each zone.
<i>IID</i>	Inter-individual distance, the inter-individual distance between object 1 and object 2, object 1 and object 3 and object 2 and object 3.

4. TROUBLESHOOTING

4.1 Previous versions

It is important to remove any previous versions before installing the new LoliTrack software:

1. Click Start→Control Panel
2. Open Programs and Features
3. Double click on National Instruments software
4. Select all packages, and then click on Remove.

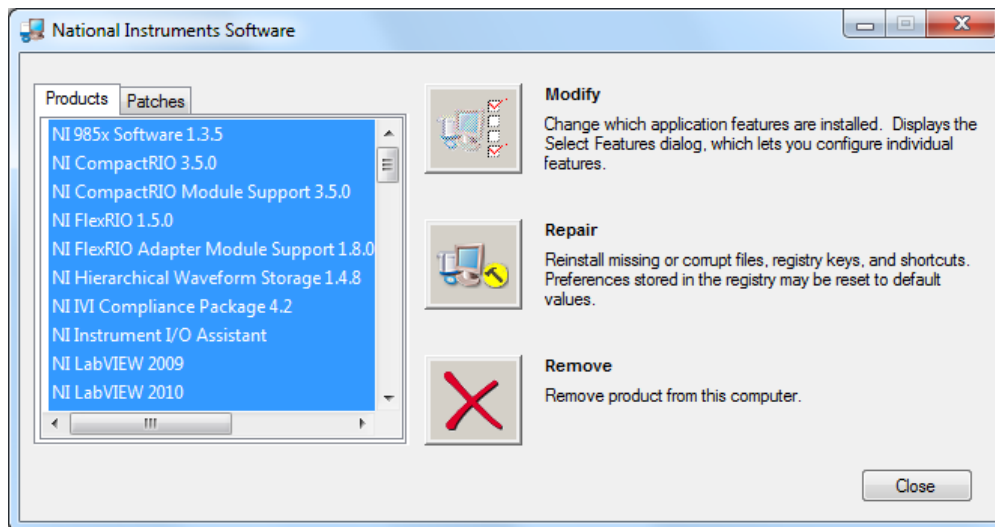


Fig. 22 - NI modules

5. You will then be notified that LoliTrack also will be removed. Click Yes
6. Now wait until all packages are uninstalled. This might take some time.
7. Windows will now ask for a restart.
8. When the computer is restarted, proceed to install the new LoliTrack software.

4.2 Run LoliTrack always as admin

1. Right click on the LoliTrack icon.
2. Choose properties.
3. Go to compatibility.
4. Enable "Run this program as an administrator"
5. Click OK.
6. Now open LoliTrack by double clicking the icon.
7. Choose Yes, to confirm that you want to start the software as admin.

Next time you want to open LoliTrack as admin only do step 6 and 7.

4.3 WiBu software protection

LoliTrack is protected with an USB hardkey dongle (WiBu), and will only run if a valid dongle is connected to an USB port on the computer. If not, the error message below will appear.

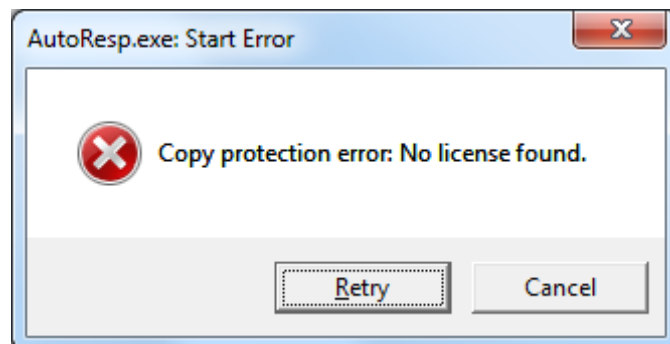


Fig. 23 - No WiBu dongle found

Plug in the WiBu hardkey dongle and wait to let it be recognized by Windows. Only then can LoliTrack be used.

4.4 Drawing a POI places two POI next to each other

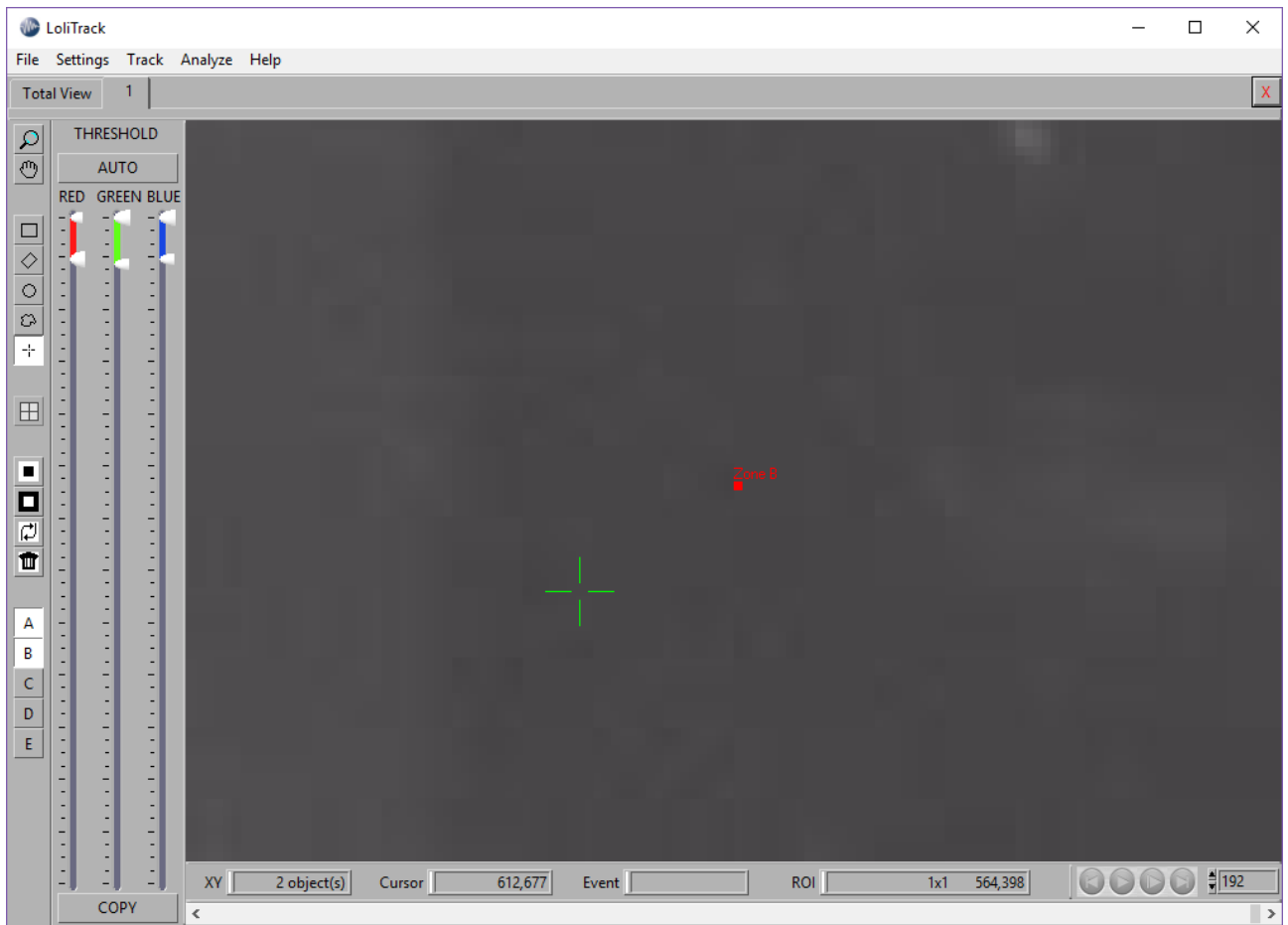
On some computer systems, two POI are generated when a POI is placed inside an arena:



Lolitrack now thinks that there is a (small) area instead of a single point:



To avoid this problem, you should place a POI and then use the arrow keys to move the POI around, so that you get a single cross (instead of two). Then press A, B or C etc. to mark that POI as A, B or C. Remember to switch on POI parameters in Analysis to get data related to the POI:



5. Glossary of terms and parameters

Term	Definition
Acceleration	<i>If the object is active, the acceleration is calculated frame by frame. The average acceleration in the header is calculated from positive acceleration values only. The average deceleration in the header is calculated from negative values.</i>
Activity	<i>Behavioral parameters calculated as active and inactive time. The lowest threshold for activity is defined as activity threshold [pixels], e.g. if the object moves a distance larger than this minimum distance between frames, the object is scored as active.</i>
Arena	<i>A user-defined area of interest where one or multiple objects can or may move freely within. In single object mode, only one object is allowed per arena (Fig. 3, page 8) In single arena mode, however, multiple objects are allowed (Fig. 9, page 12)</i>
Direction of movement	<i>If the object is active, any change in direction recorded will be calculated. The direction of movement is calculated frame by frame.</i>
Distance moved	<i>If the object is active, the distance moved is calculated frame by frame over the entire video file. The sum of total distance moved will be summarized in the file header.</i>
Direction of orientation	<i>The angle in which the object's head is pointing.</i>
Distance between A and B	<i>Calculates the distance between A and B frame by frame, e.g. this can be used to track inter-individual distances (IID). The average distance between A and B summarized in the file header is calculated from all values.</i>
Event	<i>An event is a one-time only action.</i>
Focal animal	<i>Animal of interest that user would like to track its behavior. May be a particular individual within a known group of animals.</i>
Global parameters for zone	<i>Parameters with regard to the zone such as velocity, acceleration, distance moved etc.</i>
Inter-individual distance (IID)	<i>Inter-individual distances (IID) between a pair of marked animals</i>
Object/animal	<i>Item or animal of interest</i>
Pixel to distance calibration	<i>In order to attain real distance values rather than pixel length outputs, a calibration using a marker of known distance/length is used, e.g. a ruler/graticule.</i>
Point of interest (POI)	<i>A user-defined zone where the POI is the central point and the activity threshold is the radius.</i>
POI parameters	<i>Parameters with regard to the POI (see above) such as distance and touches.</i>
State	<i>An action that continues until another behavioural state occurs</i>

Threshold bar(s)	<i>Set the threshold to a value between 1 and 255. The pixel inside an arena with a corresponding value will be marked yellow (red, yellow and pink when running single arena mode)</i>
Time stamped data	<i>A time-stamped data record for each parameter calculated.</i>
Touches	<i>Number of times where the object enters the POI activity threshold radius.</i>
Velocity	<i>If the object is active, the speeds of movement(s) are calculated frame by frame. The average velocity in the header is calculated from positive velocity values only.</i>
Zone	<i>Once an arena is defined, an area of interest can be defined as zone.</i>
Zone parameters	<i>Parameters with regards to the zones such as visits and time spent within zone.</i>