



Shuttle System Quick Guide

Follow these steps to quickly start using the system

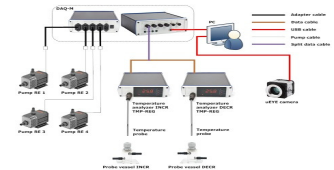
1. Install the ShuttleSoft software and the uEye-camera driver from the Loligo memory stick.

See Section 3



2. Connect the DAQ-M instrument, the two temperature analyzers and the video camera to the PC.

See Figure 1, Section 4.1



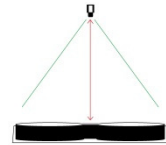
3. Start the ShuttleSoft software.

See Section 5.1



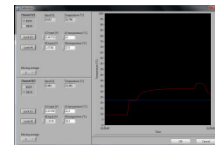
4. Mount the video camera above the shuttle tank. Make sure the image covers the entire tank.

See Section 4



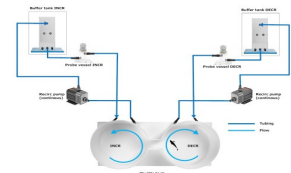
5. Calibrate the output from the temperature analyzers in ShuttleSoft.

See Section 5.2.5



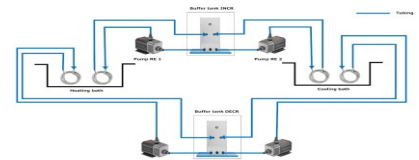
6. Connect the shuttle tank, buffer tanks and recirculation pumps and fill with water.

See Figure 2, Section 4.2



7. Place the coils in heating/cooling baths and connect them to the pumps and the buffer tanks.

See Figure 3, Section 4.3



8. Set up an experiment in ShuttleSoft.

See Section 5.2

