

# Shuttle System Quick Guide

Follow these steps to quickly start using the system

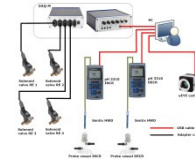
1. Install the ShuttleSoft software and the uEye-camera driver from the Loligo memory stick.

*See Section 3*



2. Connect the DAQ-M instrument, the two WTW pH instruments and the video camera to the PC.

*See Figure 1, Section 4.1*



3. Install the WTW pH instrument drivers.

*See Section 3.3*

4. Calibrate the Sentix 41 pH probes and set up the WTW pH instruments interphase.

*See Section 4.3*



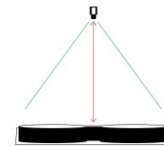
5. Start the ShuttleSoft software.

*See Section 5.1*



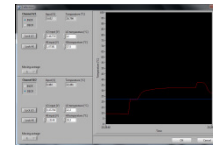
6. Mount the video camera above the shuttle tank. Make sure the image covers the entire tank.

*See Section 4*



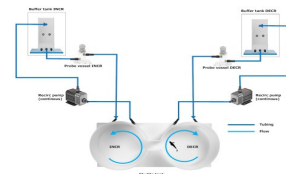
7. Calibrate the output from the two pH analyzers in ShuttleSoft.

*See Section 5.2.5*



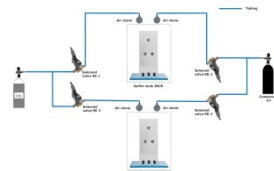
8. Connect the shuttle tank, buffer tanks and recirculation pumps and fill with water.

*See Figure 2, Section 4.2*



9. Place the air stones in the buffer tanks and connect them to solenoid valves and gas bottles. See Figure 3

*Section 4.3*



10. Set up an experiment in ShuttleSoft.

*See Section 5.2*

